



WELCOME TO LUCKNAM PARK

Country house living at its very best

Lucknam Park is a magnificent Palladian mansion dating from 1720. Maintained as a family home until 1987, it then opened its doors as one of the UK's top country house hotels. Set in 500 acres of listed parkland and beautiful gardens, Lucknam Park has been lovingly restored to the elegance and style of the past era.

The distinguished hotel was awarded three Michelin Guide Keys in 2024, and boasts 42 individually styled rooms and suites, nine stunning luxury cottages, Michelin-star dining, an award-winning Spa, Equestrian Centre, family play facility, and much more.

Lucknam Park is truly one of England's finest hotels, providing 5-star luxury at every turn.



THE COACH HOUSE
BY LUCKNAM PARK



LUXURY COTTAGES

Your very own private haven

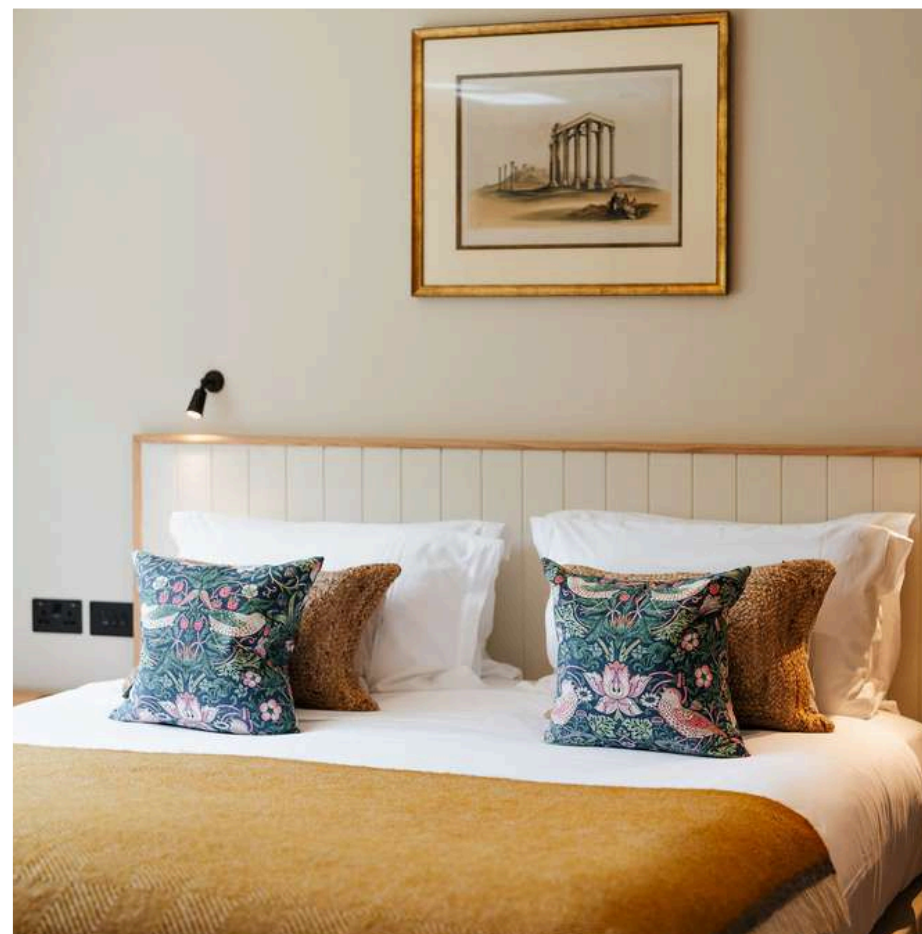
Each of our nine cottages are individually curated using a classic, country chic design with luxurious touches throughout, combining style, comfort and relaxation to create a homely feeling.

Our stone-built cottages have been designed with sumptuous interiors and beautifully manicured gardens, offering a secluded escape to the countryside.

Each cottage has its own fully fitted kitchen with all the facilities required to produce the perfect family feast, cosy living rooms with wood-burning stoves, bedrooms with sweeping views, and bathrooms that echo pure splendour - finished using the finest marble.

Our cottage collection offers three categories, with the Country cottages being the entry level, cosy range. Our Manor cottages are slightly larger with more comfort, and our Grand cottages are the largest and most impressive.





KEEPER'S COTTAGE

Country Cottage (3-bed)

This pretty stone cottage is situated next to the Equestrian Centre, just a short walk from the hotel. The interiors offer a quintessential British design perfect for families and small groups. Keeper's Cottage sleeps a maximum of six guests and one additional infant cot.

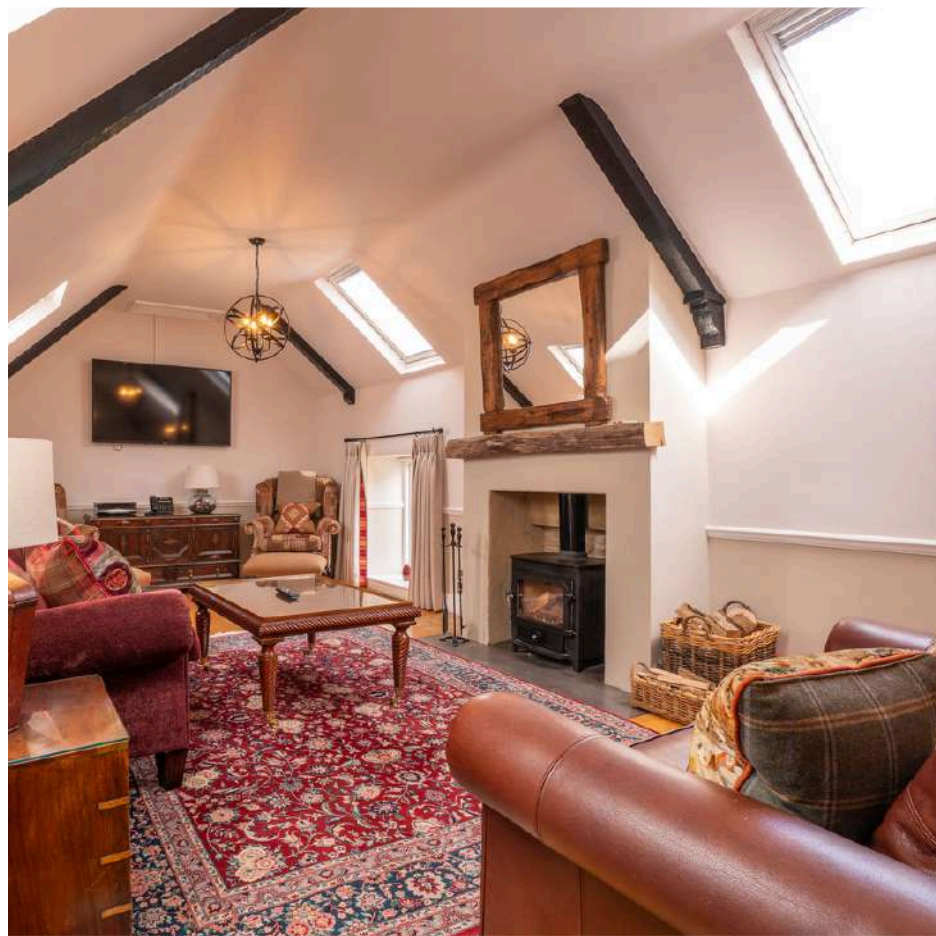
Description:

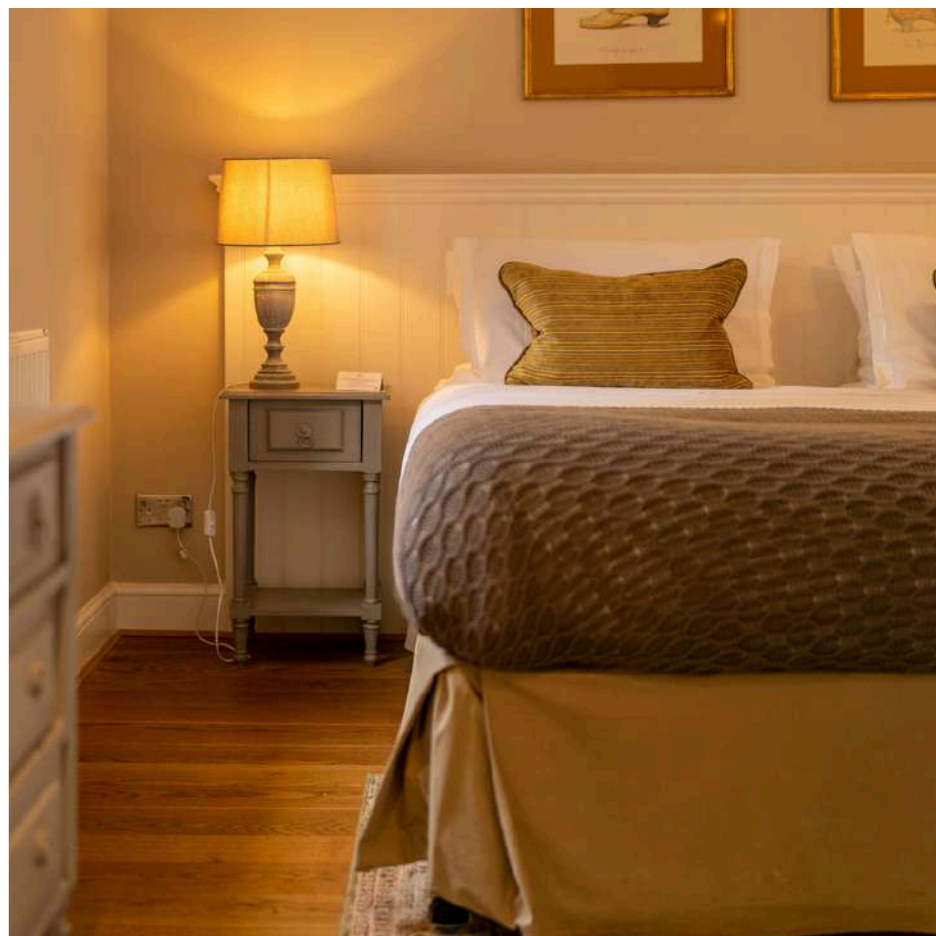
- One double bedroom with ensuite shower
- One ground floor twin bedroom with ensuite shower
- One ground floor double/twin bedroom with ensuite bath and shower
- Hand-built country kitchen with range cooker
- Dining room
- Upstairs living room with wood-burning stove
- Enclosed garden and terrace

Amenities:

- Wi-Fi, Smart TV in each bedroom
- TV in living room
- Dedicated parking
- Dog-friendly (maximum of two medium dogs)







THATCHER'S COTTAGE

Country Cottage (3-bed)

Thatcher's Cottage is a quaint stone cottage situated near the Equestrian Centre, just a short walk from the hotel. Perfect for families and small groups, it sleeps six guests with room for one additional infant cot.

Description:

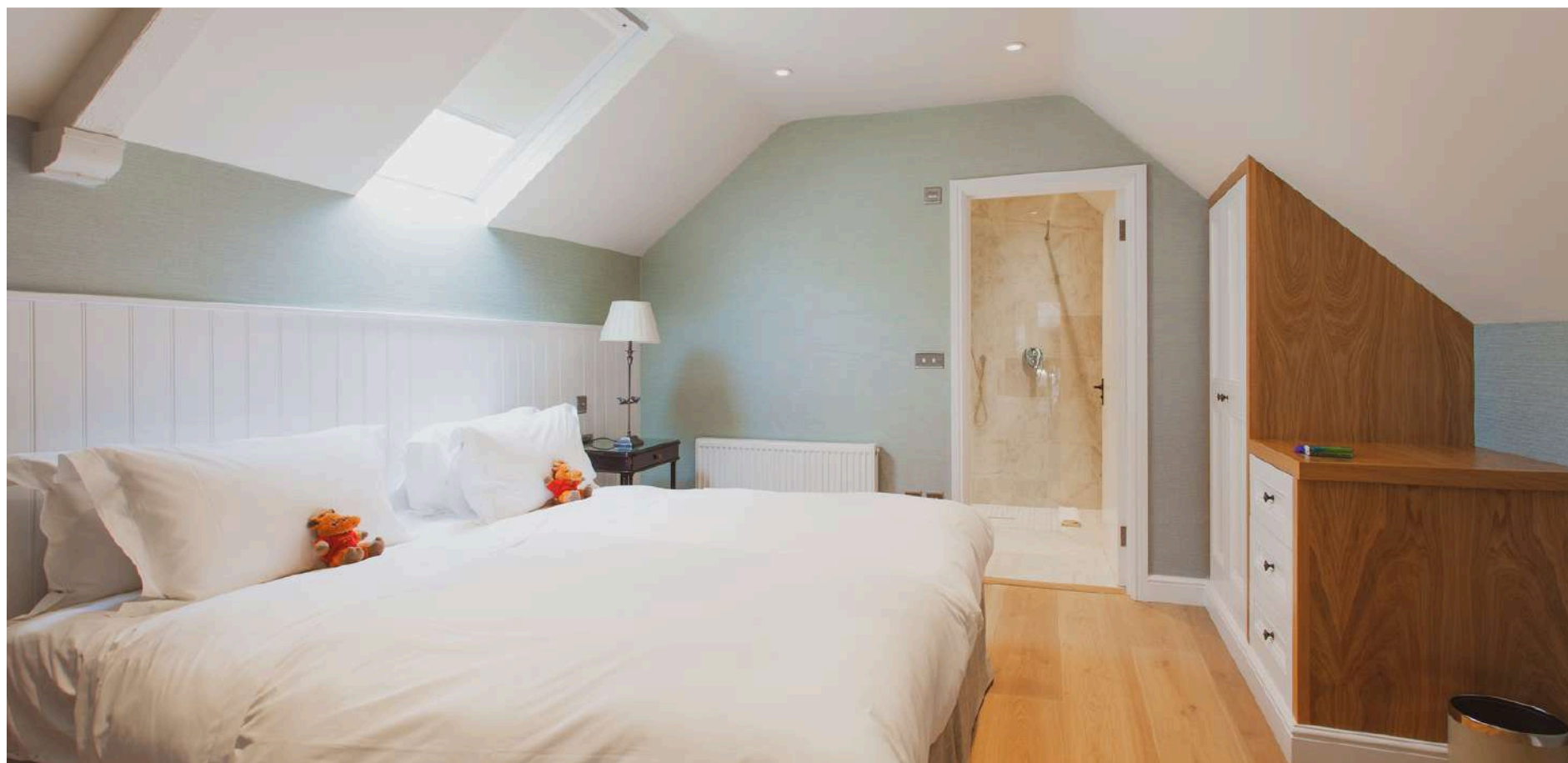
- One ground floor double bedroom with ensuite shower
- One twin bedroom with ensuite shower
- One double bedroom with ensuite bath and shower
- Hand-built country kitchen with range cooker
- Open-plan kitchen and dining room with wood-burning stove
- Conservatory
- Enclosed garden and terrace

Amenities:

- Wi-Fi, Smart TV in each bedroom
- TV in kitchen and conservatory
- Dedicated parking
- Dog-friendly (maximum of two medium dogs)







GATE HOUSE

Manor Cottage (1-bed)

This striking stone-built cottage has all the historic features one would expect from a Gate House. With a cosy, writer's cottage feel, this one-bed sanctuary offers the perfect getaway for two guests.

Description:

- Sleeps up to two adult guests (no children permitted)
- One double bedroom
- Country kitchen with modern oven
- Dining room
- Enclosed garden and terrace

Amenities:

- Wi-Fi, flat-screen TV in each bedroom
- TV in living room
- Dedicated parking
- Dog friendly (maximum of two, medium size)







PADDOCK VIEW

Manor Cottage (3-bed)

Located near the Equestrian Centre, this stone-built three-bed cottage has sweeping views of the fields beyond its manicured garden. Sleeping up to six guests plus one additional infant cot, this cottage makes the perfect accommodation for a family, group of friends, or work stay.

Description:

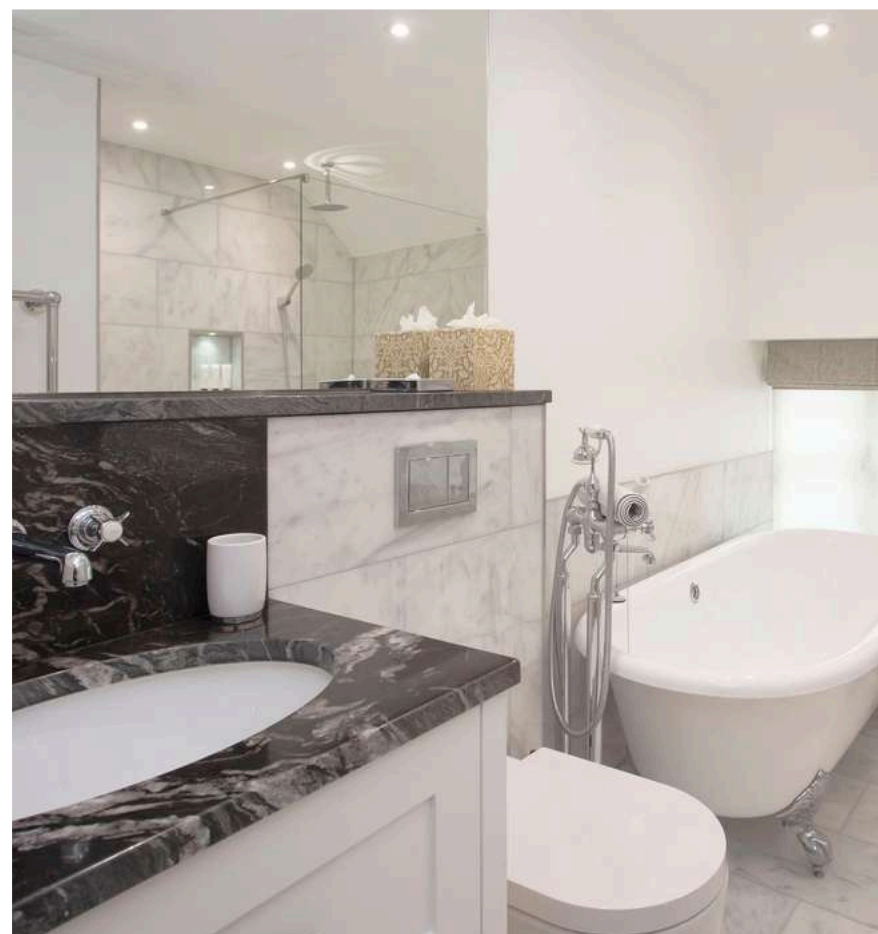
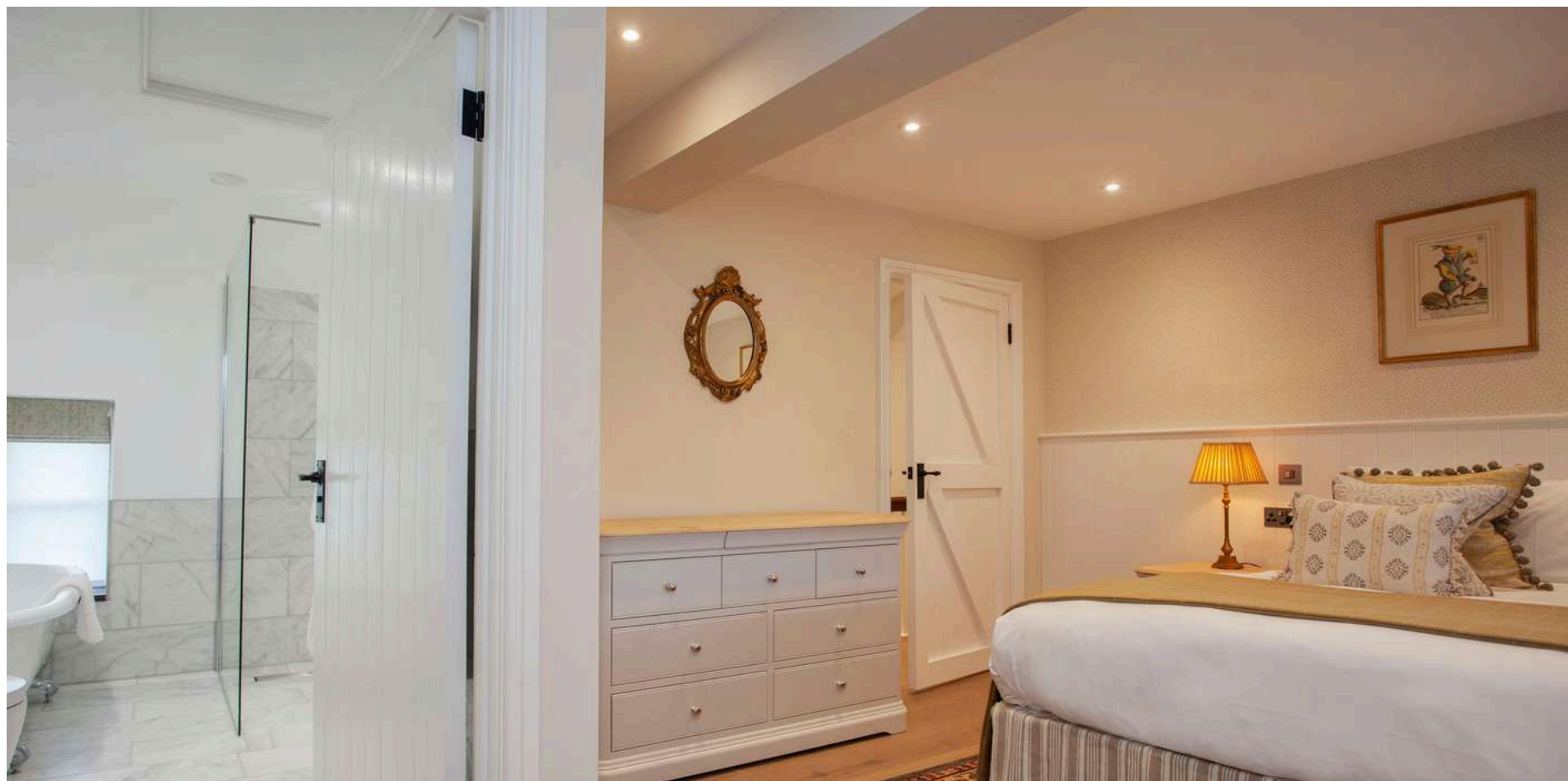
- Two double rooms with ensuite shower
- One twin room with ensuite shower and bath
- Handcrafted country kitchen with range cooker
- Open-plan kitchen and dining room
- Sitting room with large patio doors and wood-burning stove
- Private garden with terrace

Amenities:

- Wi-Fi, Smart TV in each bedroom
- TV in kitchen diner
- Dedicated parking
- Dog friendly (maximum of two, medium size)







COACH HOUSE

Manor Cottage (3-bed)

Nestled in a quiet corner near the Equestrian Centre, this three-bed cottage blends into nature with its stone walls and pale green wooden frames. Sleeping up to six guests plus one additional infant cot, Coach House makes the perfect accommodation for a family, group of friends, or work stay.

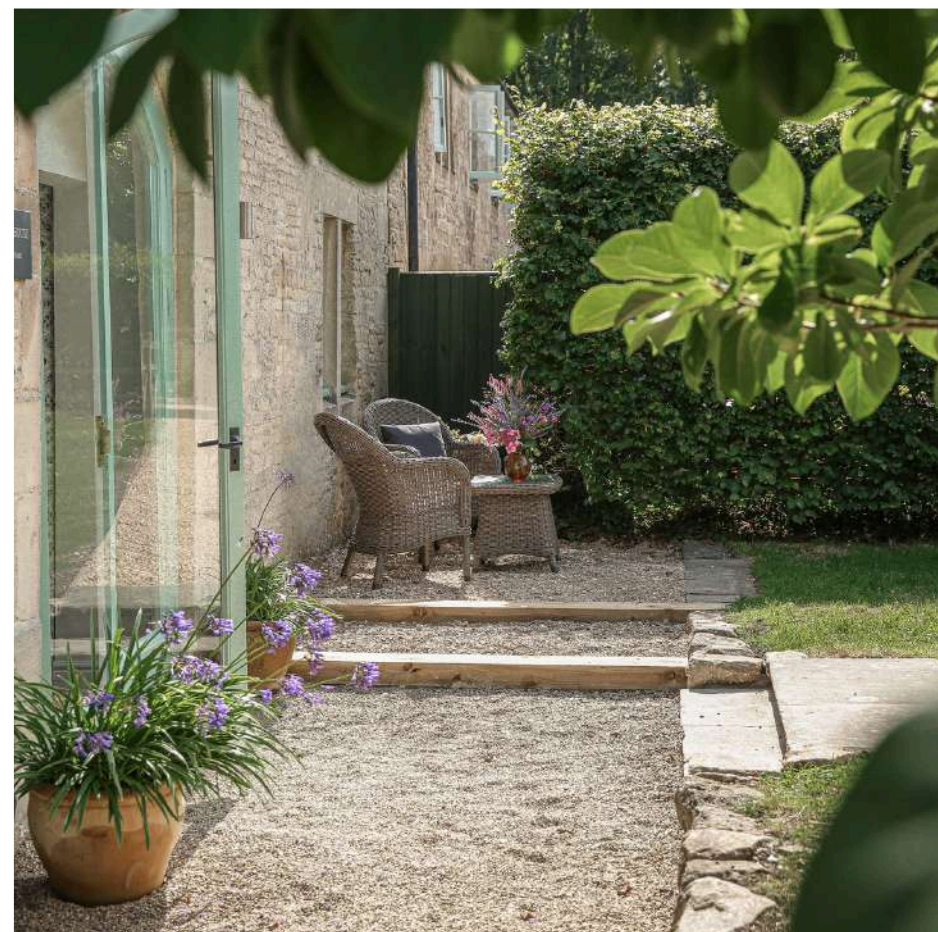
Description:

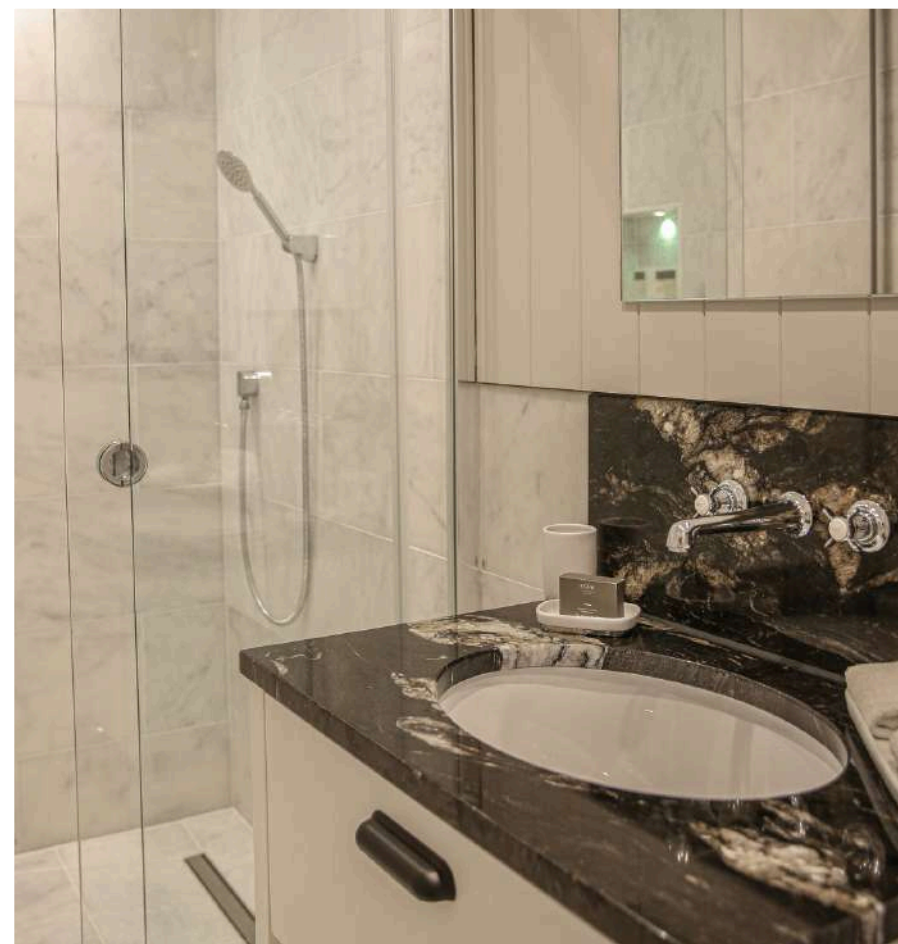
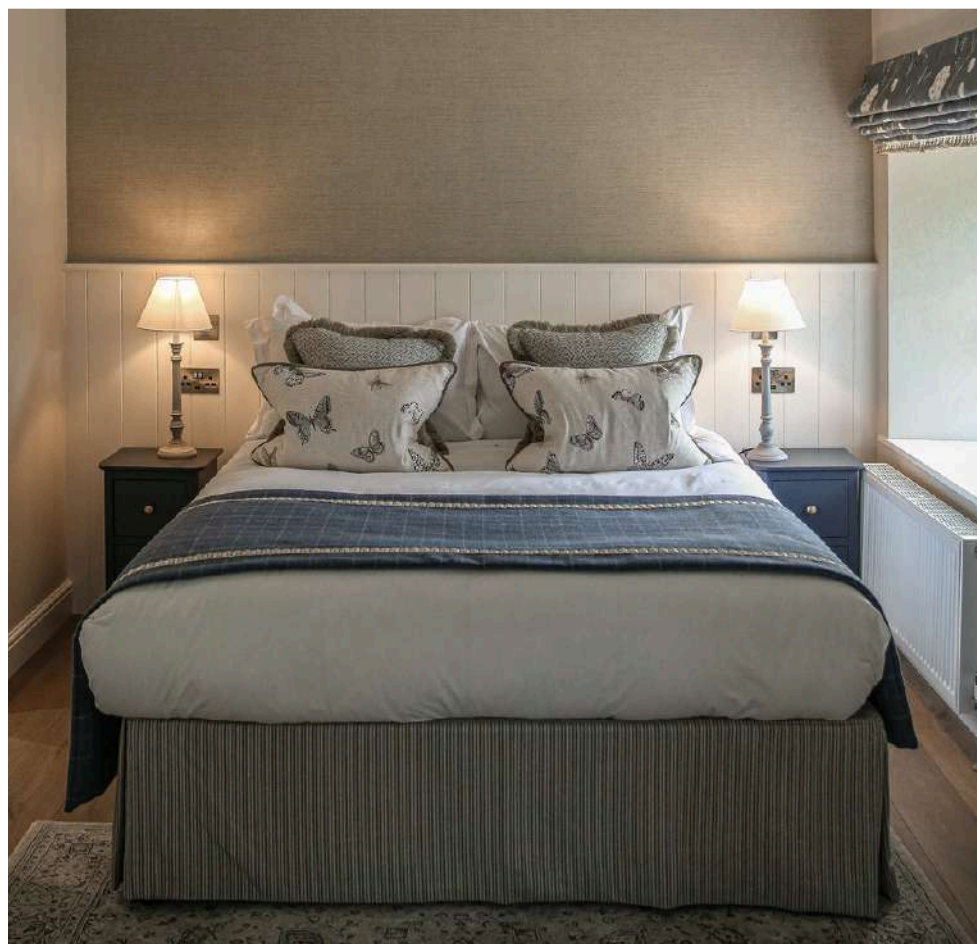
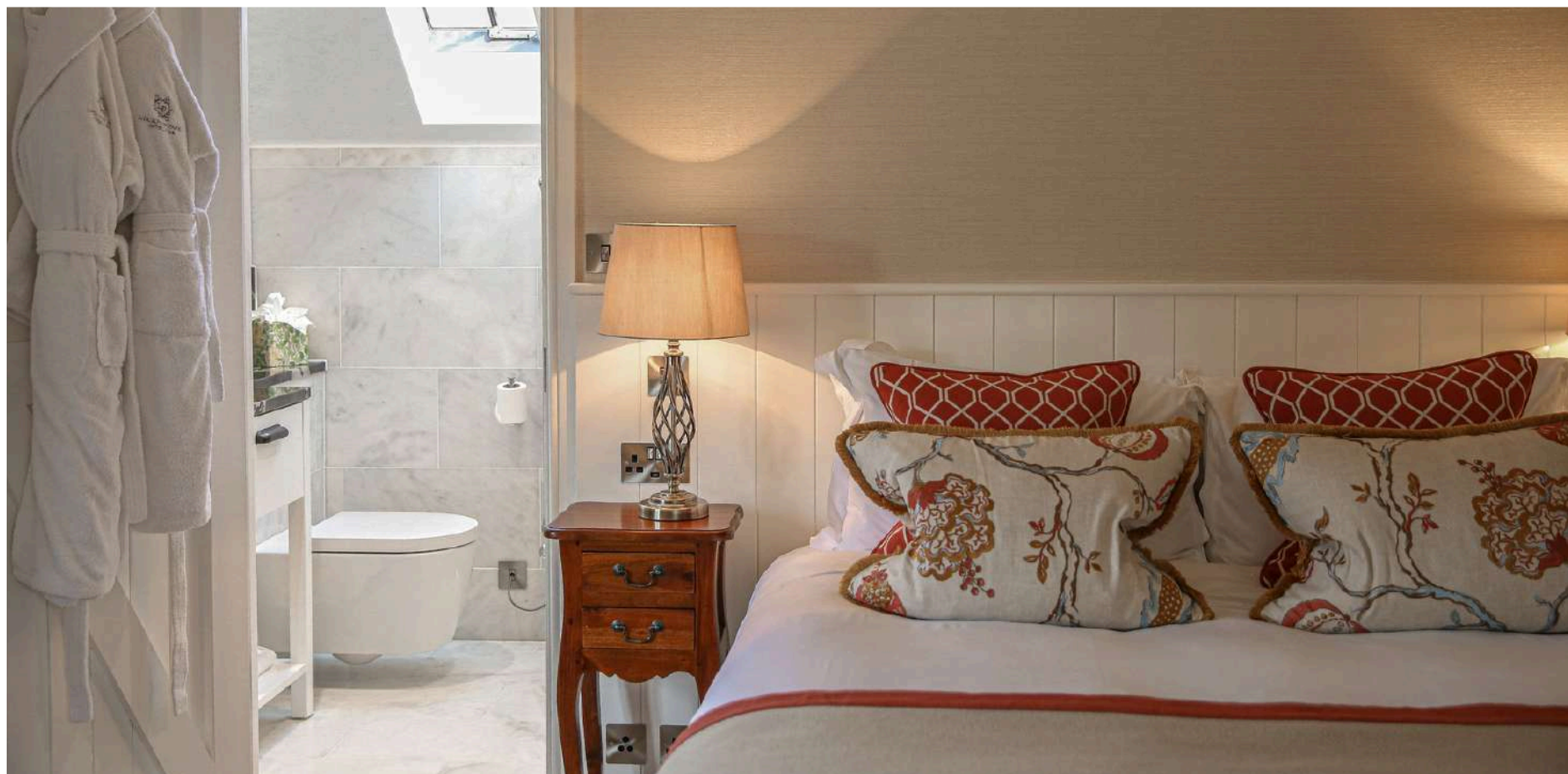
- Two double rooms with ensuite shower
- One twin room with ensuite shower and bath
- Hand-built country kitchen with range cooker
- Open plan kitchen and dining room with wood burning stove
- Snug lounge
- Private garden with terrace

Amenities:

- Wi-Fi, Smart TV in each bedroom
- TV in kitchen diner
- Dedicated parking
- Dog-friendly (maximum of two, medium size)







APPLE & PEAR TREE COTTAGES

Grand Cottages (2-bed)

This pair of beautiful stone-built cottages sit next to each other in mirror image. They are both designed in a modern, country cottage style and have their own enclosed garden and terrace.

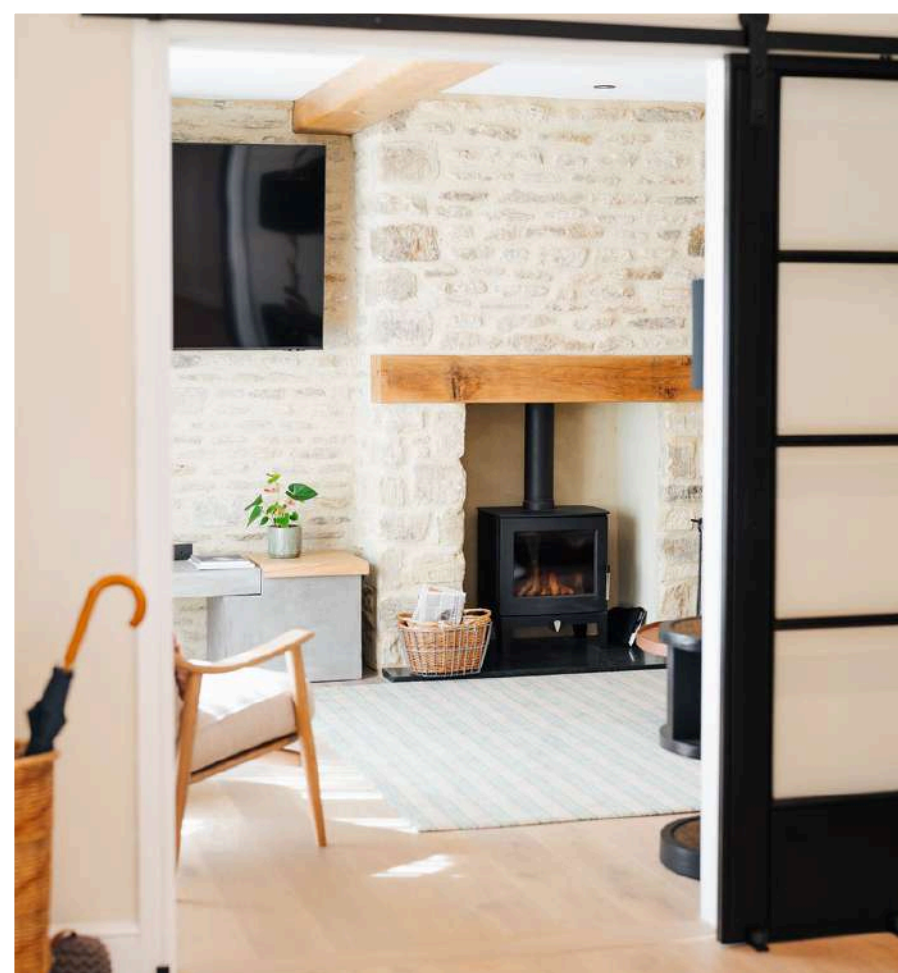
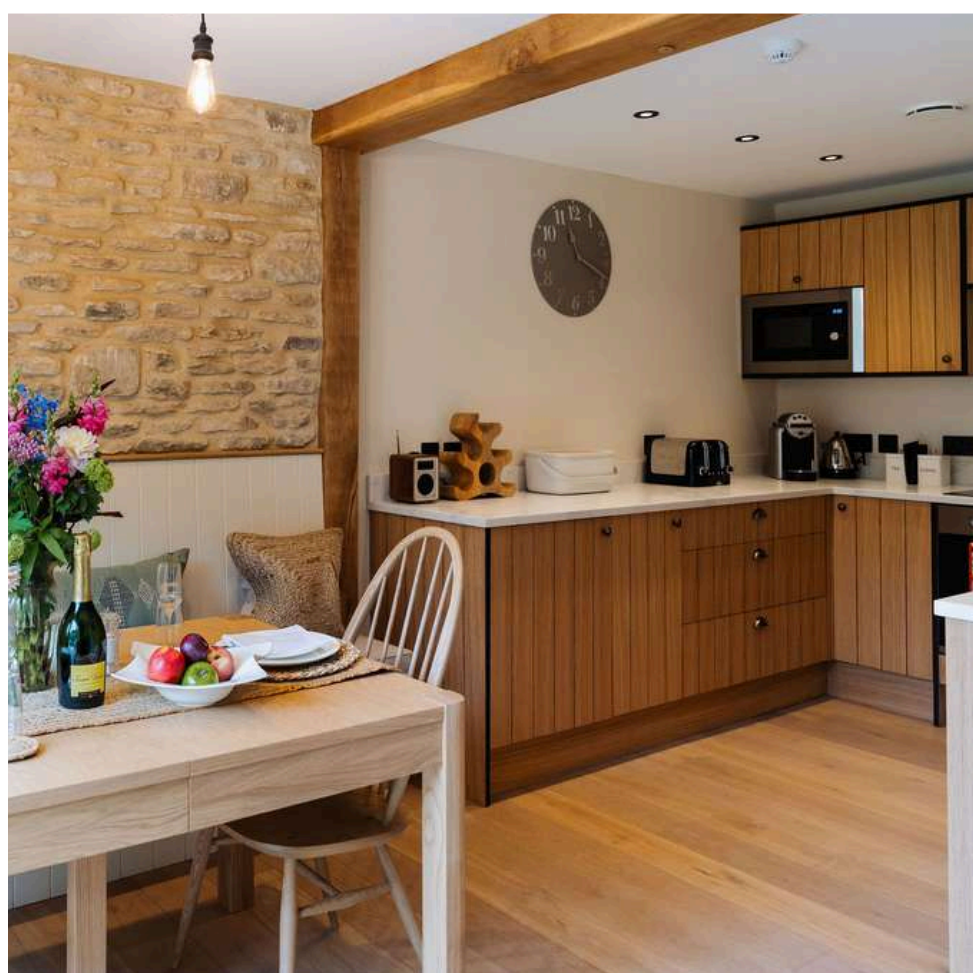
Description:

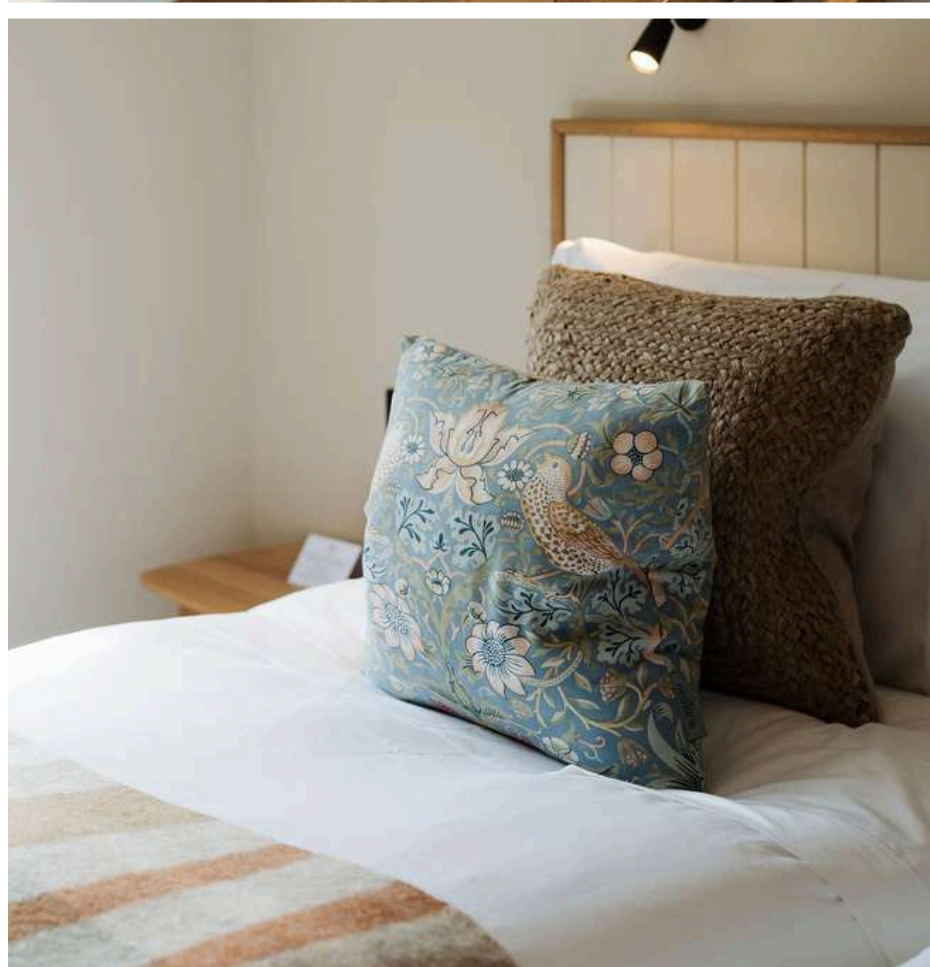
- One double with ensuite and copper bath
- One twin room (bed can be configured as zip-link or double) with ensuite shower
- Hand-built country kitchen with range cooker
- Dining room
- Lounge with wood-burning stove
- Private garden with terrace

Amenities:

- Wi-Fi, Smart TV in each bedroom
- TV in kitchen diner
- Dog-friendly (maximum two, medium size)
- Dedicated parking







MIDDLE LODGE

Grand Cottage (3-bed)

Middle Lodge is our largest 3-bed stone built cottage with manicured gardens to the front and rear. It is located near the Equestrian Centre and is a short walk to the main hotel facilities. This cottage can accommodate six guests and one infant cot.

Description:

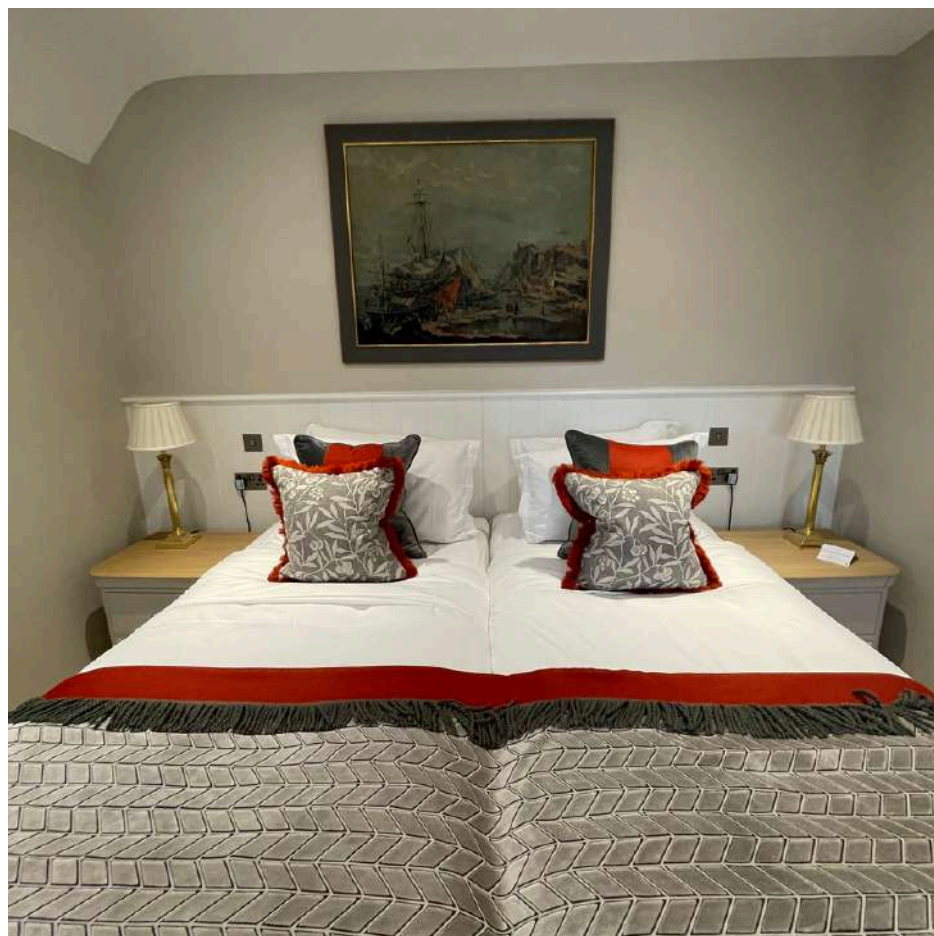
- One ground floor double bedroom with ensuite shower
- One double bedroom with ensuite shower and bath
- One twin bedroom with ensuite shower and bath
- Hand-built country kitchen with range cooker
- Open-plan kitchen and dining room
- Lounge with bifold doors to the rear garden
- Snug with wood-burning stove
- Private garden with terrace

Amenities:

- Wi-Fi, Smart TV in each bedroom
- TV in kitchen diner
- Dog-friendly (maximum two, medium size)
- Dedicated parking







SQUIRES COTTAGE

Grand Cottage (4-bed)

Squires is our largest detached stone-built cottage, with interiors offering a stylish British design. It is located near the Spa and a short walk to the main hotel. Squires sleeps up to eight guests, plus one infant cot.

Description:

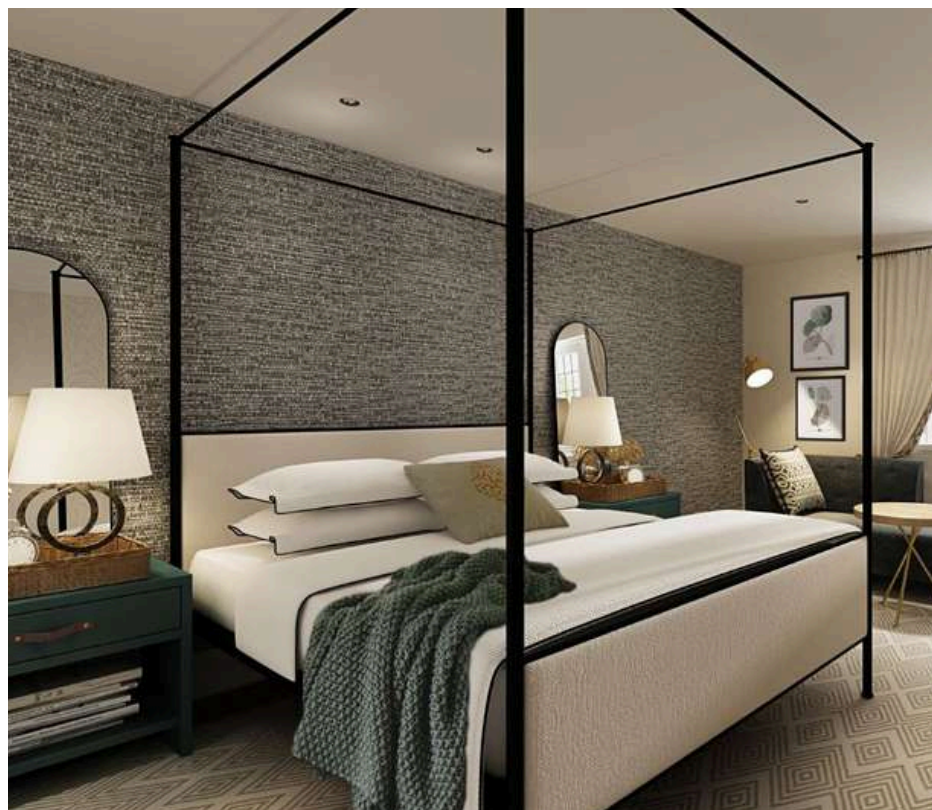
- One ground floor double bedroom with ensuite shower
- One four-poster bedroom with ensuite shower and bath
- One double bedroom with ensuite shower and bath
- One twin bedroom with ensuite shower and bath
- Hand-built country kitchen with range cooker
- Open-plan kitchen, living and dining room with wood-burning stove
- Private garden with terrace

Amenities:

- Wi-Fi, Smart TV in each bedroom
- TV in living room
- Dog-friendly (maximum two, medium size)
- Dedicated parking







RESIDENT FACILITIES

Secluded escapes with 5-star hotel luxury

Enjoy full flexibility during your stay, with the option of a self-contained cottage, or access the luxury hotel amenities, including two restaurants, Equestrian Centre, children's play facilities, and an award-winning Spa.

In the main house you will find **Restaurant Hywel Jones**, serving Afternoon Tea and pre-dinner drinks in the Library and Drawing Room, followed by an unforgettable Michelin-starred evening dining experience.

Walled Garden Restaurant offers all-day casual dining with delicious seasonal menus, or kick back in the bar area and choose from an extensive selection of cocktails, wine and nibbles.

Take a rejuvenating dip in the Spa's stunning 20-metre indoor pool, enjoy the tranquility of the indoor/outdoor hydrotherapy pool with views of the arboretum, or book a treatment with one of our highly trained specialists.

The best way to explore our 500-acre estate is on horseback, and our Equestrian Centre offers a range of experiences suitable for multiple abilities and ages.







A FAMILY-FRIENDLY HAVEN

Enjoy quality time & make memories

Fun, friendly and full of entertainment - experience new activities, or go on a bug hunt through the parkland.

Located just 6 miles from Bath and within easy reach of popular family destinations such as Longleat, Bowood, and Cotswolds Water Park, Lucknam Park is an ideal choice for a family break.

Whatever the weather, little ones with their parents can keep entertained in our fantastic family facility, The Hideaway. Set just a short walk away from the cottages, the wooden lodge is a place for fun and activities that will see imaginations come to life. With a nearby Activity Pod featuring table tennis, a pool table, musical instruments, and an outdoor play area, you'll be spoilt for choice.





GOOD TO KNOW

Additional information

- Our cancellation policy for cottages is 14 days with pre-payments in full required 14 days prior to your day of arrival
- Check-in is available from 3pm
- Check-out is 10am
- Breakfast is available in Walled Garden Restaurant and is charged as taken
- Room service is available to cottages 12pm-10pm
- All hotel facilities, including dining, require pre-booking and subject to availability
- Dogs are welcome with notice at time of booking, and carry a surcharge
- Cots and highchairs can be supplied with prior notice. There is a surcharge for an infant in cottages when maximum room capacity is used
- Management is on-site in the main hotel
- Daily change of linen and towels included with all cottage bookings
- Chargeable concierge services available including full housekeeping service
- Electric car chargers available in the main carpark and cottage carpark
- Helicopter landing pad available with prior notice



LUCKNAM PARK HOTEL & SPA, COLERNE, SN14 8AZ

Tel: +44 (0)1225 742777

www.lucknampark.co.uk

Follow us: @lucknam_park

